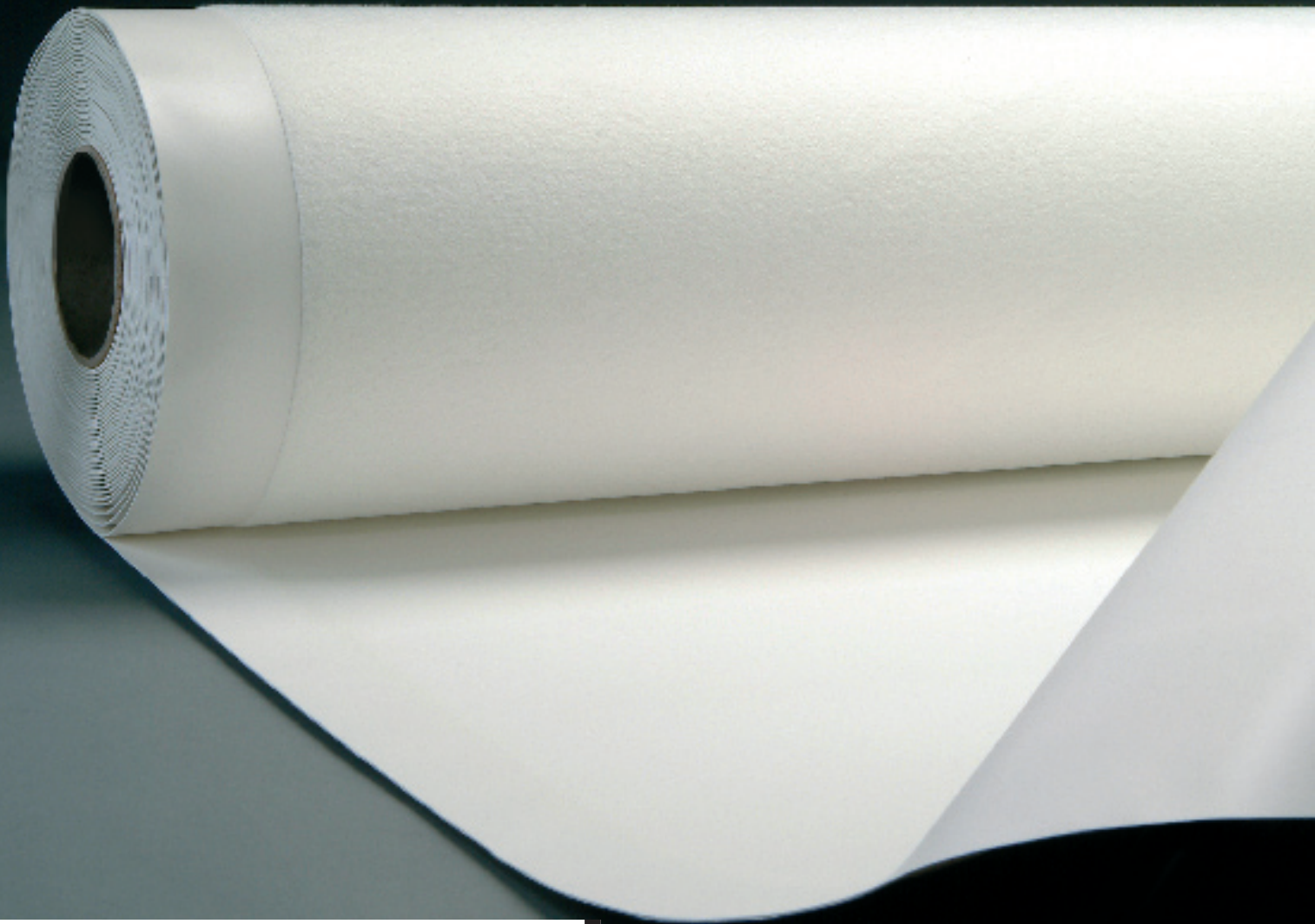


**WOLFIN**



# **TECTOFIN<sup>®</sup> RV**

The Innovation for New Buildings  
and Large Surface Areas

**Henkel**

Quality for Professionals

## High-quality features that speak for themselves:

- universal use
- anti-microbial action
- ozone- and UV-resistant
- highly stable/flexible at low temperatures
- extremely tearproof
- bitumen-resistant
- suited for solvent and hot-air welding
- resistant to penetration by plant roots
- recyclable

*TECTOFIN RV is equipped with a particularly robust fabric backing.*



**TECTOFIN RV roofing membrane has been especially designed for new buildings and large surface areas.**

**Acrylic synthetic rubber** is a sophisticated material which, thanks to its favourable property profile, has proven its worth in high-tech areas. After several years of development work, Wolfen developers have now succeeded in combining the properties of acrylic synthetic rubber with those of a plastic roofing membrane to create an easy-to-lay variant.

Due to its novel formulation based on acrylic synthetic rubber, this roofing membrane is highly elastic and both temperature- and weather-resistant.

TECTOFIN RV is a homogeneous membrane manufactured by extrusion. It is backed with a particularly robust polyester fabric and comes factory-finished with

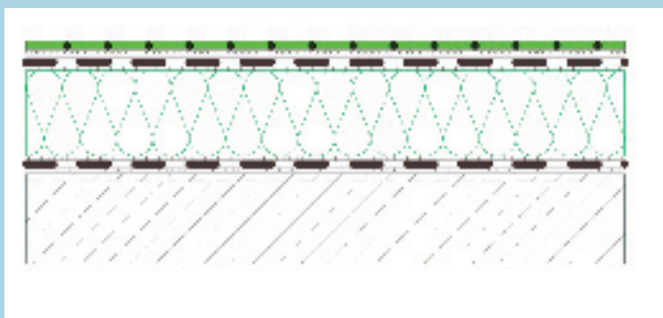
a fabric-free welding edge. Due to the high-quality components of its formulation, TECTOFIN RV is suitable for all laying techniques.

A patent has been filed for TECTOFIN RV and it has been tested in compliance with DIN 16726. On request we are glad to provide the test certificate issued by the German Institute of Construction Engineering.

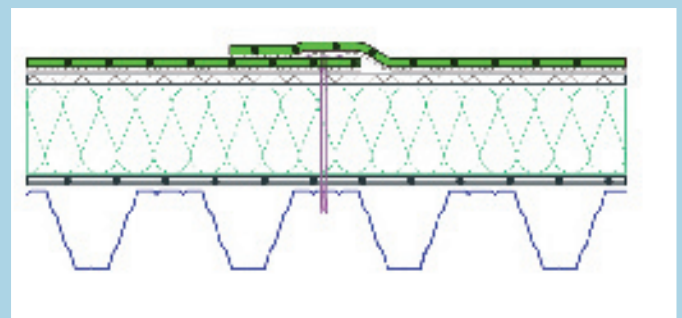
### Easy to apply at low temperatures

Thanks to its acrylic synthetic rubber base, TECTOFIN RV is highly flexible and easily workable even at low temperatures. It is suited for both hot-air and solvent welding. In addition, TECTOFIN RV features a wide temperature range for welding to facilitate application of the membrane.

## New building



Bonded layer structure.



Mechanically fixed layer structure.

# The Innovation for New Buildings and Large Surface Areas

## Technical data TECTOFIN® RV (ASA-PVC-P)

Properties RV	Tests/ Test conditions acc. to DIN 16724, paragraph	TECTOFIN®
UV-resistance	Weather exposure 4500 MJ/m <sup>2</sup> 5.1 / 5.6 Tabelle 1: A-VII	Yes
Building material class Spreading fire + radiant heat	DIN 4102, part 1 DIN 4102, part 7	B2 Fulfilled
Resistance to plant roots	DIN 4062 FLL	Yes Being tested
Maximum tensile strength	5.6 Table 1: C-VI	longitudinal transverse > 850 N > 900 N
Maximum elongation force	5.6 Table 1: C-VI	longitudinal transverse > 75 % > 70 %
Shear test behaviour of the seam	5.7 Table 1: C-VI	Tear beyond the seam
Further tear force	5.8.2	longitudinal transverse > 220 N > 235 N
Folding in cold weather	5.14	No cracks
Dimensional change after warm storage (6 h / 80°C)	5.13.1	longitudinal transverse 0,68% 0,10%
Condition of membrane after warm storage	5.13.2	No blister formation
Behaviour under water pressure Test pressure: 2 bar / 24 h	5.11	Tight
Perforation test behaviour	5.12	Tight
Water vapour diffusion resistance	DIN 53122	approx. 28,000

## Product range TECTOFIN RV

roofing membrane, white and grey

Product name	Thickness mm	Width mm	Length m	Area m <sup>2</sup> /roll
TECTOFIN RV	2.2	1,100	20	22.0
TECTOFIN RV	2.2	1,620	20	32.4
TECTOFIN RV	2.5	1,100	15	16.5
TECTOFIN RV	2.5	1,620	15	24.3

TECTOFIN RV 2R	2.5	1,140	15	17.1
TECTOFIN RA duo	1.5	1,100	20	22.0

TECTOFIN R	1.2	1,100	20	22.0
TECTOFIN R	1.2	150	20	3.0

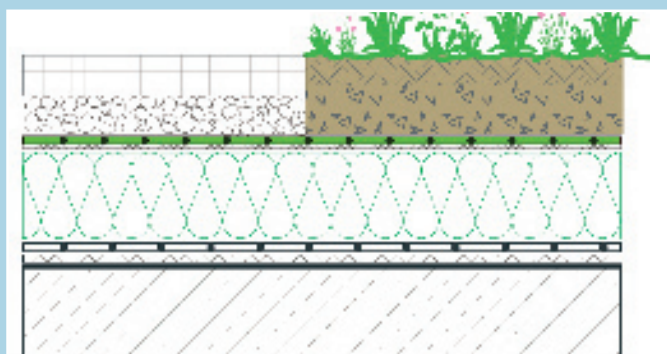
(homogeneous membrane without fabric backing, cut to size)

### TECTOFIN R System components

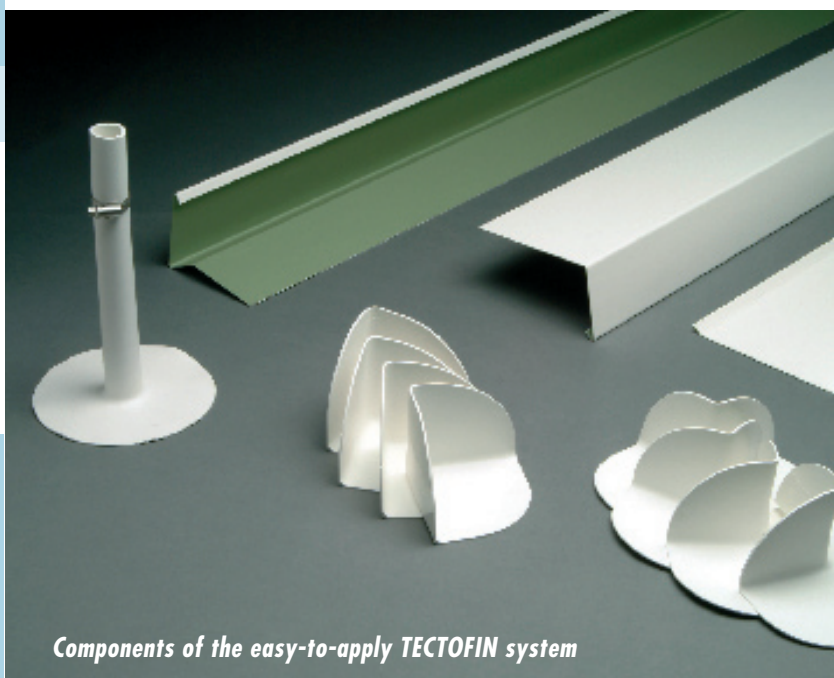
- TECTOFIN R  
Composite sheet plate 1,000 2 2  
50 plates per pallet
- Inner / outer corners 25 pcs/carton
- Lightning protection trims 5 pcs/carton  
Ø inner 22 mm, Ø outer 25 mm, pipe length 25mm
- TECTOFIN liquid, white and grey, 0.85 kg can

### Adhesives

- Terokal 3958 bucket 9.5 kg
- Terokal 325 canister 2.0 kg



Loose lay (under a protective ballast).



Components of the easy-to-apply TECTOFIN system

### Please note:

The above information is based on our practical experience and applied testing. Site- or application-specific conditions may vary from those described here, and thus the correct and successful use of our products is beyond our sphere of influence. The user should therefore first carry out sufficient tests to ensure our product is suitable.

Please also observe the relevant laying and welding instructions.

**Henkel**

**Quality for Professionals**

**Henkel Bautechnik GmbH**

Wolfen Bautechnik

Am Rosengarten 5

D-63607 Wächtersbach-Neudorf

Phone 0 60 53/ 708 -0

Fax 0 60 53/ 708 -130

e-mail: [wolfen.bautechnik@henkel.com](mailto:wolfen.bautechnik@henkel.com)

[www.wolfen.com](http://www.wolfen.com)



HA/06.2006

**Waterproofing that works**