

WOLFIN

MITSUBISHI

MITSUBISHI ELECTRIC
AUTOMOTIVE CZECH s.r.o.

COSMOFIN[®]

Seals tighter than tight

WOLFIN

Henkel

BAUTECHNIK

Waterproofing that works

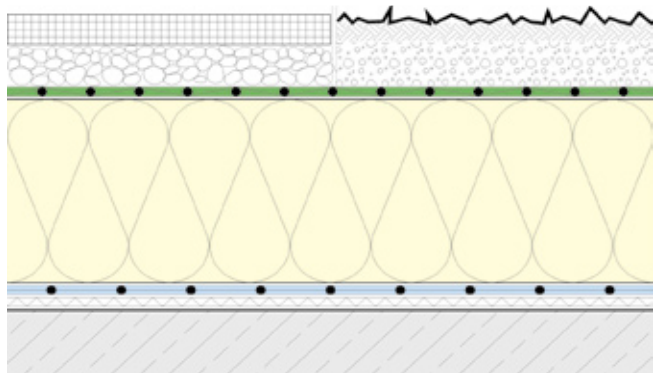
Quality straight off the roll: COSMOFIN

Roofing and sealing membranes are produced using the method of extrusion. Compared to calendered membranes, they offer quite a number of advantages. **Find out for yourself what makes them the superior solution:**

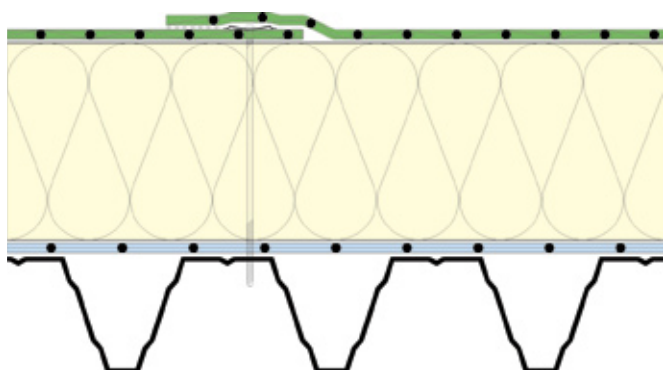
- lower elastic shrinkage (or retraction) of the membrane
- homogeneous and capillary-free membrane edge
- antimicrobial treated
- a formulation ideal for solvent welding
- Hot air weldable
- free of cadmium and lead stabilisers
- UV-resistant
- resistant to penetration by plant roots according to the FLL procedure
- recyclable
- due to its high-quality formulation only one membrane for all laying techniques

Suitable for use

with the following laying techniques*:



Loose lay, with a protective layer (gravel, landscape or top screed).



Mechanical fixing

*in case of direct contact between COSMOFIN and polystyrene a separate layer is required



COSMOFIN technical data

| Product properties | Tests / Test conditions according to DIN 16 734, paragraph | COSMOFIN FG* |
|--|---|--|
| UV resistance | Weathering exposure 6000MJ/m ² 51/56, table 1: A-VII | Yes |
| Resistance to plant roots | FLL procedure according to DIN 4062 | Yes |
| | | Yes |
| Maximum tensile strength | 5.6 Tabelle 1:C-VI | longitudinal > 1300 N transverse > 1300 N |
| Maximum elongation force | 5.6 Tabelle 1:C-VI | longitudinal > 14 % transverse > 14 % |
| Shear test behaviour seam | 5.7 Tabelle 1:C-VI | Tear beyond of the seam |
| Further tear force | 5.8.2 | longitudinal > 300 N transverse > 300 N |
| Separation force | 5.9 | longitudinal > 110 N transverse > 140 N |
| Crack-free folding in cold weather | 5.14 | Crack resistant |
| Dimensional change after warm storage (6 h/800 C) | 5.13.1 | longitudinal < 1 % transverse < 1 % |
| Condition of membrane after warm storage | 5.13.2 | no blister formation |
| Behaviour under water pressure; test pressure 2 bar/24 h | 5.11 | tight |
| Perforation test behaviour | 5.12 | tight |
| Water vapour diffusion resistance | DIN 53122 | ca. 28.000 |
| Externally monitored | SKZ Würzburg | Yes |
| Test values for membrane thickness 1,5 mm | | |

COSMOFIN is a fabric-reinforced PVC roofing and sealing membrane, plasticized with the help of monomers, in compliance with DIN 16 734.

COSMOFIN is produced by extrusion and factory-finished with a homogeneous, capillary-free edge.

COSMOFIN FG can be welded by hot air or solvent.

It is highly UV resistant and is antimicrobial treated.

COSMOFIN FG is suitable for use on flat roofs and also for sealing activities according to DIN 18-195, parts 4, 5 and 7.

COSMOFIN FG is not compatible with bitumen.



Without fabric insert for forming details



Equipped with built-in polyester fabric

COSMOFIN system components

| Product name | Width mm | Length m | Surface area qm | Weight/qm ca. kg |
|--|----------|----------|--------------------------|----------------------------|
| COSMOFIN Composite sheet plate made of 0.6 mm rolled galvanized sheet metal and COSMOFIN membrane, light grey | 1000 | 2 | 2 | 5,7 |
| COSMOFIN Composite sheet roll, light grey | 1000 | 30 | 30 | 5,7 |
| | | | Coverage | Content / Container |
| Terokal 914 membrane bonding | | | ca. 300g/ m ² | 10 kg |
| COSMOFIN Solvent welding agent | | | ca. 40g/ m | 1l / 30 l |
| COSMOFIN liquid for seam sealing, light grey | | | ca. 20g/ m | 0,85 kg / 11 kg |
| COSMOFIN Lightning protection trim: internal 20 mm, external 24 mm, pipe length 200 mm | | | | 5 pieces |
| COSMOFIN Inner corner, 90°, light grey | | | | 25 pcs/carton |
| COSMOFIN Outer corner, 90°, light grey | | | | 25 pcs/carton |
| Other colours available on request | | | | |

COSMOFIN roofing and sealing membrane

PVC-P-NB, acc. to DIN 16734

COSMOFIN FG membrane, Color: light-grey

| Product- Name | Thickness mm | Width mm | Length m | Surface area /Roll qm | Weight/qm ca. kg | Shipping unit |
|------------------|-----------------|-------------|-------------|--------------------------|---------------------|-----------------|
| COSMOFIN FG | 1,2 | 1.100 | 20 | 22 | 1,65 | 20 rolls/pallet |
| COSMOFIN FG | 1,2 | 1.620 | 20 | 32,4 | 1,65 | 20 rolls/pallet |
| COSMOFIN FG | 1,5 | 1.100 | 20 | 22 | 2,05 | 20 rolls/palet |
| COSMOFIN FG | 1,5 | 1.620 | 20 | 32,4 | 2,05 | 20 rolls/pallet |
| COSMOFIN FG | 1,8 | 1.100 | 15 | 16,5 | 2,45 | 15 rolls/pallet |
| COSMOFIN FG | 1,8 | 1.620 | 15 | 24,3 | 2,45 | 15 rolls/pallet |
| COSMOFIN FG | 2,0 | 1.100 | 15 | 16,5 | 2,70 | 15 rolls/pallet |

Henkel Bautechnik GmbH

Wolfen Bautechnik

Am Rosengarten 5

D-63607 Wächtersbach-Neudorf

Phone 0 60 53/ 708 -0

Fax 0 60 53/ 708 -130

e-mail: wolfen.bautechnik@henkel.com

www.wolfen.com



HA/06.2006